

2019

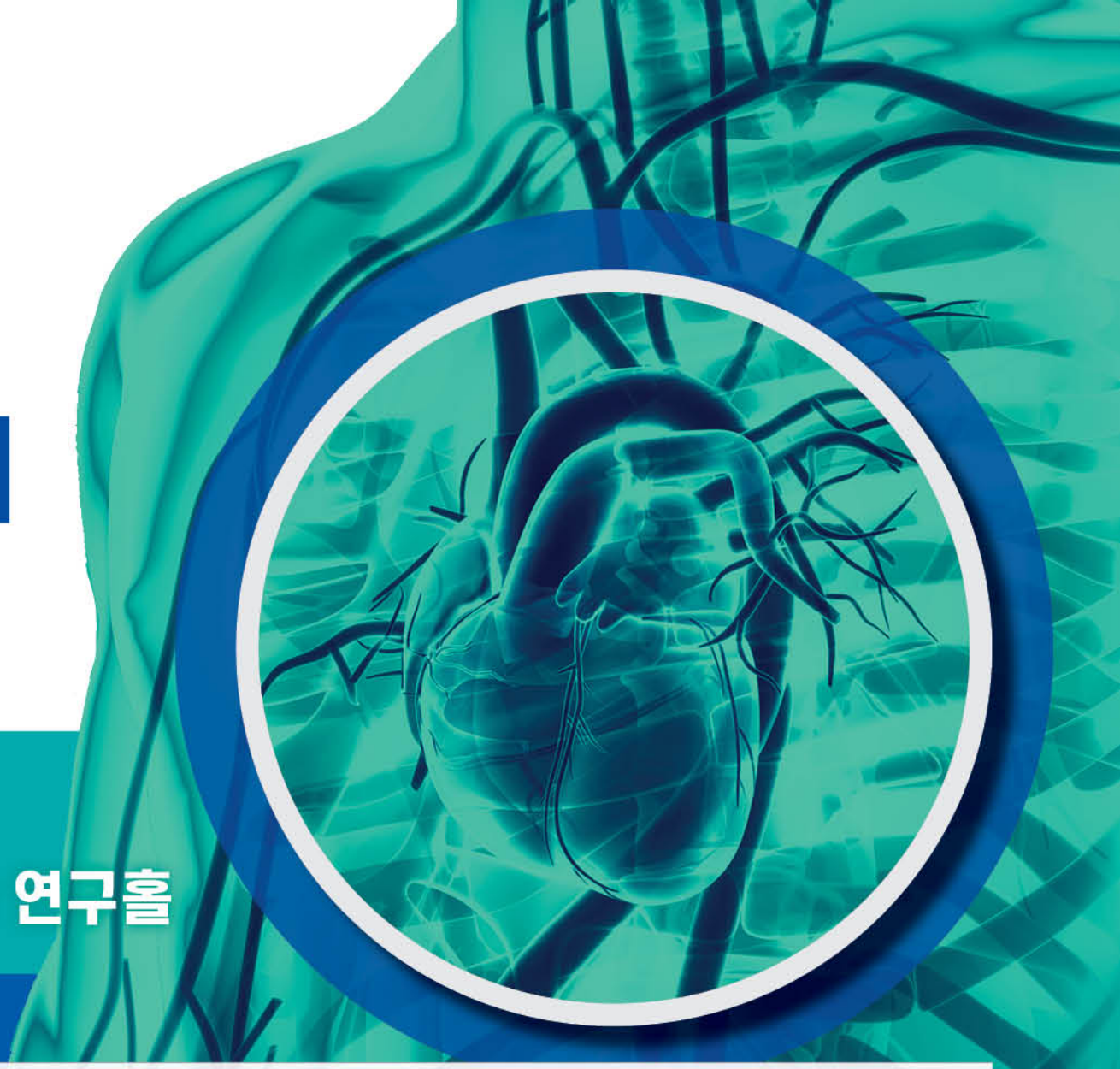


대한심장학회 심근경색연구회
The Korean Society of Myocardial Infarction

대한심장학회 심근경색연구회 하계 심포지엄

2019.7.19(금) JW메리어트 호텔 동대문

2019.7.20(토) 서울대학교병원 의학연구혁신센터 서성한 연구홀



DAY 1

16:30-17:00	등록	
Session 1	Korean Expert Consensus of Pharmacotherapy for Acute Myocardial Infarction	좌장 정명호(전남의대), 채성철(경북의대), 박헌식(경북의대)
17:00-17:10	Background of Korean expert consensus of pharmacotherapy for AMI: comparison between Korean & western data	안영근(전남의대)
17:10-17:20	Thrombolytic therapy for AMI	김현국(조선의대)
17:20-17:30	Adjunctive therapy for PCI in AMI	김민철(전남의대)
17:30-17:40	Beta-blocker therapy for AMI	추은호(가톨릭의대)
17:40-17:50	RAS inhibitor therapy for AMI	한주용(성균관의대)
17:50-18:00	Antiplatelet therapy for AMI	정영훈(경상의대)
18:00-18:10	Statin therapy for AMI	장기욱(가톨릭의대)
18:10-18:30	Q&A	
지정토의	이장훈(경북의대), 심두선(전남의대), 박경우(서울의대), 김원(경희의대), 허정호(고신의대), 황병희(가톨릭의대), 임성민(세종메디플렉스)	
19:00-20:00	Welcome Dinner	

DAY 2

08:00-08:20	등록	
08:20-08:30	환영사	심근경색증연구회 회장 정명호 교수
Session 1	Management of AMI: Hot Topics in 2019	좌장 한규록(한림의대), 김두일(인제의대), 홍범기(연세의대)
08:30-08:42	DAPT Updates: Stop it Early or Stop it Late?	박용휘(경상의대)
08:42-08:54	Cholesterol Updates: How low is low Enough?	원호연(중앙의대)
08:54-09:06	Vascular Access in Primary PCI; radial first always?	허정호(고신의대)
09:06-09:30	Q&A	
지정토의	강웅철(가천의대), 강현재(서울의대), 배장환(충북의대), 문재연(분당차병원)	
Session 2	Quick Poll Session 1: "How to" in AMI	좌장 임도선(고려의대), 김무현(동아의대), 차광수(부산의대)
09:30-09:35	Case: Cardiac arrest without ST-segment elevation after ROSC - optimal timing of CAG?	김정수(양산부산대)
09:35-09:47	Discussion	Panel & Audience
09:47-09:50	Rebuttal & elaboration	김정수(양산부산대)
09:50-09:55	Case: Type 2 MI: MI or Not? - Management and Prognosis	안서희(울산의대)
09:55-10:07	Discussion	Panel & Audience
10:07-10:10	Rebuttal & elaboration	안서희(울산의대)
10:10-10:15	Case: The Enigma of MINOCA - What should I do?	김 원(경희의대)
10:15-10:27	Discussion	Panel & Audience
10:27-10:30	Rebuttal & elaboration	김 원(경희의대)
지정토의	최시완(충남의대), 박현용(경상의대), 조진만(경희의대), 남창욱(계명의대)	
10:30-11:00	Coffee break	
Session 3	Deep dive to the area of uncertainty	좌장 안영근(전남의대), 나득영(동국의대), 박종선(영남의대)
11:00-11:12	In-hospital acute myocardial infarction; how to improve prevention and treatment	박상호(천안순천향의대)
11:12-11:24	Spontaneous coronary artery dissection - what is the best to go?	이상엽(충북의대)
11:24-11:36	"troponinemia" without a specific diagnosis warrant attention?	이봉기(강원의대)
11:36-12:00	Q&A	
지정토의	양태현(인제의대), 박근호(조선의대), 정진욱(충남의대), 오석규(원광의대)	
12:00-13:00	Luncheon Session	좌장 정명호(전남의대)
12:00-12:15	Translate Ticagrelor scientific evidence into clinical practice: My Experience on Ticagrelor in the acute and long-term setting	이종영(성균관의대)
12:15-12:30	Cardio-Renal & metabolism, holistic approach for different results with SGLT2I	배장환(충북의대)
12:30-13:00	Moderate poster presentation	
Session 4	Quick Poll Session 2: "When and How" in AMI	좌장 김호수(서울의대), 황진용(경상의대)
13:00-13:05	Case: Mechanical circulatory support for protected high-risk PCI: when and how?	양정훈(성균관의대)
13:05-13:17	Discussion	Panel & Audience
13:17-13:20	Rebuttal & elaboration	양정훈(성균관의대)
13:20-13:25	Case: Image-guided PCI in STEMI: when and how?	윤혁준(계명의대)
13:25-13:37	Discussion	Panel & Audience
13:37-13:40	Rebuttal & elaboration	윤혁준(계명의대)
13:40-13:45	Case: PCI in STEMI patients with concomitant CTO: when and how?	조재영(원광의대)
13:45-13:57	Discussion	Panel & Audience
13:57-14:00	Rebuttal & elaboration	조재영(원광의대)
지정토의	임상엽(고려의대), 장우진(창원 성균관의대), 신은석(울산병원), 박재형(고려의대), 유승기(을지의대)	
Session 5	Joint session: 심근경색연구회 & 권역심뇌혈관질환센터	좌장 정명호(전남의대), 주승재(제주대의대)
14:00-14:12	Current status of AMI in Korea I; insights from KAMIR-NIH	김용철(전남의대)
14:12-14:24	Current status of AMI in Korea II; new insights from KRAMI	김복범(경상의대)
14:24-14:36	Truth or myth? Fact check for regional differences in cardiovascular mortality in Korea	이장훈(경북의대)
14:36-15:00	discussion	
지정토의	김용훈(강원의대), 양동현(경북의대), 황석재(경상의대), 김주환(전남의대), 황경국(충북대), 박경일(동아대), 강동구(목포중앙병원)	
15:00-15:20	Coffe Break	
Session 6	Case Presentation : my best or worst case in AMI intervention	좌장 고영엽(조선의대), 장기욱(가톨릭의대)
15:20-15:35	Case 1	윤재용(구미차병원)
15:35-15:50	Case 2	김봉준(고신의대)
15:50-16:05	Case 3	권오경(서울의대)
16:05-16:20	Case 4	홍승표(대구가톨릭의대)
지정토의	진종규(순천향의대), 오주현(성균관의대), 류재근(대구가톨릭의대), 김광실(인제의대)	
16:20-16:30	Closing Remark	